



SBW-06D2X-U

BDXL Support - Maximum Data Storage up to 128GB

- BDXL format support
- Extreme 6X Blu-ray writing speed
- 2011 iF Design Award
- 2012 Taiwan Excellence Award
- Blu-ray 3D support, 2D to 3D DVD conversion, DVD upscaling to HD 1080p (optional)
- Dolby EX and DTS-HD (5.1 channels)(optional)



6X
Blu-ray Writer
SBW-06D2X-U

ASUS
Inspiring Innovation • Persistent Perfection

BDXL Support
Maximum Data Storage 128GB

BDXL™ Format Support

Allows users to burn huge amounts of data on a single Blu-ray disc, up to 100GB on BD-R(TL), and 128GB on BD-R(QL)



The Best Burning Quality

Auto Tuning Power technology ensures optimized power to burn a disc with the best quality

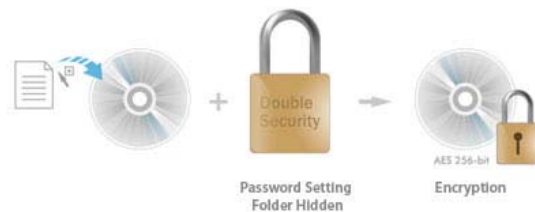
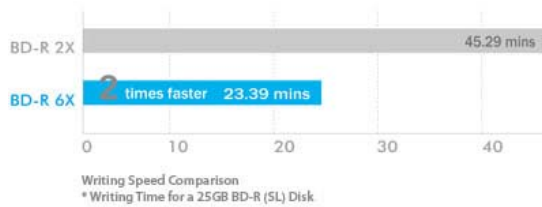


6X Blu-ray High Speed

Turbo Engine enables 6X Blu-ray writing

Double the Security On-the-Go

Disc Encryption II doubles the security with password-controls and hidden-file function, protecting important user data



Drag-and-Burn

Friendly interface with only three simple steps to burn a disc, making the process easier than ever



Flexible Dual Positioning

Vertical and horizontal two-way placement

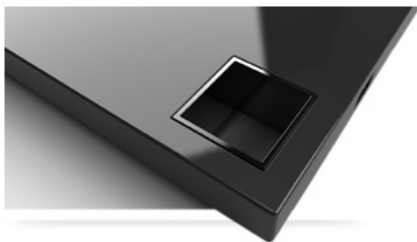


Blu-ray 3D Support

- ASUS supports latest Blu-ray 3D technology, but the Blu-ray playback software is subjected to change by area. Please check with your supplier for exact offers.
- [Learn more about Blu-ray 3D](#)

Award Winning Design

The 2011 iF Design Award product design is inspired from miniaturized architectural forms, using elegant squared lines and a unique stand



Specifications

Color	Black
Read Speed	BD-R : 6X BD-RE : 6X BD-ROM : 6X BD-R(DL) : 6X BD-RE(DL) : 6X BD-ROM(DL) : 6X BD-R(TL/QL) : 4X BD-RE(TL) : 2X DVD+R : 8X DVD-R : 8X DVD+RW : 8X DVD-RW : 8X DVD-ROM : 8X DVD+R(DL) : 6X DVD-R(DL) : 6X DVD-ROM(DL) : 6X DVD-RAM : 5X CD-R : 24X CD-RW : 24X CD-ROM : 24X BDMV Playback : 2X DVD Video Playback : 4X

	VCD Playback : 10X Audio CD Playback : 10X
Write Speed	BD-R : 6X BD-R(DL) : 6X BD-R(TL/QL) : 4X BD-RE : 2X BD-RE(DL) : 2X BD-RE(TL) : 2X DVD+R : 8X DVD-R : 8X DVD+RW : 8X DVD-RW : 6X DVD+R(DL) : 6X DVD-R (DL) : 6X DVD-RAM : 5X CD-R : 24X CD-RW : 16X
Writing Mode	BD-RE : Random Write BD-R : Sequential Write DVD+R & DVD+R (DL) : Sequential Write DVD-R & DVD-R(DL) : DAO/Incremental Recording DVD+RW : Random Write DVD-RW : DAO/Restricted Overwrite/Incremental Recording DVD-RAM : Random Write CD-R/RW : DAO/TAO/SAO/Packet Write
Access time	BD(SL/DL) : 300 ms BD(TL/QL) : 450 ms DVD : 190 ms CD : 190 ms
Interface	USB 2.0
Data Buffer	2 MB
OS Support	Windows® 7 Windows® Vista Windows® XP Windows® Server 2003 Windows® Server 2008 Mac OS X 10.6 or higher
System Requirements	CPU: Intel Pentium® D 945(3.4GHz) or higher RAM: 1GB or more is recommended Graphics Card: NVIDIA® GeForce 7600 GT or ATI X1600 series or above Use HDCP Compatible display and VGA card to High Definition digital output
Software	Cyberlink Power2Go 7 Cyberlink PowerDVD 10 with Magic Cinema (optional) Cyberlink PowerBackup 2.5 (optional) Cyberlink InstantBurn 5 (optional) TurboEngine
Disc Formats	Audio CD, Video CD, CD-I, CD-Extra, Photo CD, CD-Text, CD-ROM/XA, Multi-session CD, DVD Video, BD video
Disc Diameters	12cm/8cm
Dimensions	157 x 140 x 18.5 mm (LxWxH)
Weight	290 g 335 g (With Stand)
Power	USB Power +5V ± 5%
Temperature	Operating : 5 °C to 40 °C Storage : -30 °C to 60 °C
Humidity	Operating : 15 % ~ 80 % (Non-condensing) Storage : 10 % ~ 90 % (Non-condensing)